

Moulding Lane, London, SE14 6BF

A generously sized one-bedroom apartment set within Cobalt Tower, just a short walk from New Cross Overground Station. The property boasts a bright and airy open-plan kitchen and reception room, offering ample space for both living and dining, with direct access to a large private balcony.

The apartment features a spacious double bedroom with built-in storage, a modern family bathroom, and additional storage conveniently located in the hallway. Residents also benefit from a concierge service and secure bike storage.

Ideally positioned, the property is within easy reach of a wide range of local amenities, including bakeries, bars, convenience stores, restaurants, and several nearby parks.

- Spacious One Bedroom Apartment
- Private Terrace
- Good Transport Links
- Close to Local Amenities
- Plenty of Storage
- Modern family bathroom
- Secure Bike Storage Available

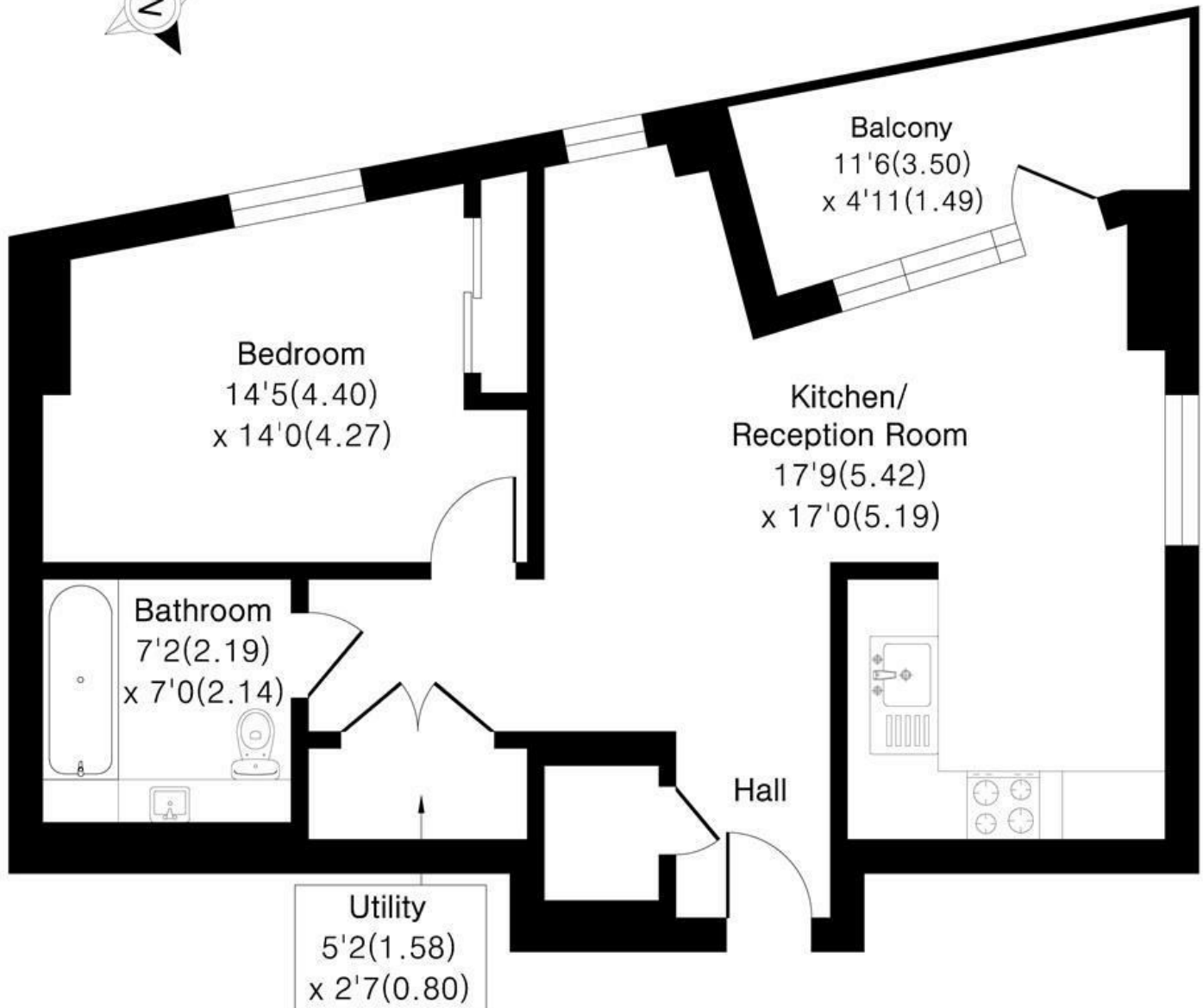
£1,800 Per month

Alex & Matteo
ESTATE AGENTS

Cobalt Tower, Moulding Lane, SE14

Approximate Area = 590 sq ft / 54.7 sq m

For identification only - Not To Scale



Second Floor



Floor plan Produced in accordance with RICS Property Measurement 2nd Edition.
Incorporating International Property Measurement Standards (IPMS2 Residential).
Produced for Alex & Matteo Estate Agents.



Energy Efficiency Rating		Current	Potential
Very energy efficient - lower running costs			
(92 plus) A			
(81-91) B		82	82
(69-80) C			
(55-68) D			
(39-54) E			
(21-38) F			
(1-20) G			
Not energy efficient - higher running costs			
England & Wales		EU Directive 2002/91/EC	